



Placental Alkaline Phosphatase(PLAP) rabbit mAb(ABT73R)

Catalog No	YP-Ab-15487
Isotype	IgG
Reactivity	Human
Applications	IHC;IF
Gene Name	ALPP PLAP
Protein Name	Placental Alkaline Phosphatase(PLAP)
Immunogen	Synthesized peptide derived from human Placental Alkaline Phosphatase(PLAP)
Specificity	This antibody detects endogenous levels of Placental Alkaline Phosphatase(PLAP) at Human
Formulation	Liquid in PBS containing 50% glycerol, 0.5% BSA and 0.02% sodium azide.
Source	Polyclonal, Rabbit,IgG
Purification	The antibody was affinity-purified from Cell supernatant by affinity-chromatography using specific immunogen.
Dilution	IHC-p 1:10. IF 1:50-200
Concentration	1 mg/ml
Purity	≥90%
Storage Stability	-20°C/1 year
Synonyms	Alkaline phosphatase, placental type (EC 3.1.3.1;Alkaline phosphatase Regan isozyme;Placental alkaline phosphatase 1;PLAP-1)
Observed Band	
Cell Pathway	Cell membrane; Lipid-anchor, GPI-anchor .
Tissue Specificity	Detected in placenta (at protein level).
Function	catalytic activity:A phosphate monoester + H(2)O = an alcohol + phosphate.,cofactor:Binds 1 magnesium ion.,cofactor:Binds 2 zinc ions.,miscellaneous:In most mammals there are four different isozymes: placental, placental-like, intestinal and tissue non-specific (liver/bone/kidney).,online information:Alkaline phosphatase entry,polymorphism:Placental ALP is highly polymorphic, there are at least three common alleles.,similarity:Belongs to the alkaline phosphatase family.,subunit:Homodimer.,
Background	



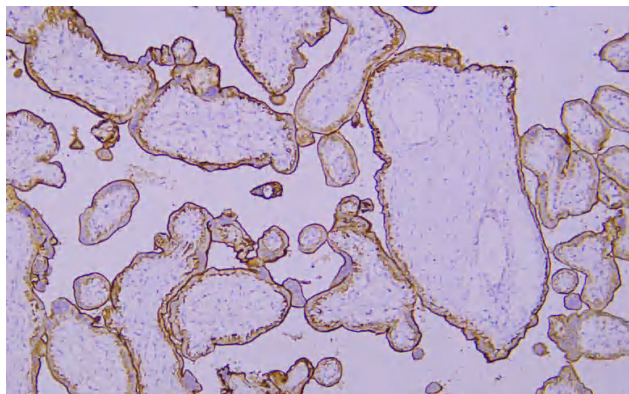
matters needing attention

Avoid repeated freezing and thawing!

Usage suggestions

This product can be used in immunological reaction related experiments. For more information, please consult technical personnel.

Products Images



Immunohistochemical analysis of paraffin-embedded human Placenta. 1, Antibody was incubated at 4° overnight. 2, Citrate buffer of pH6.0 was used for antigen retrieval. 3,Secondary antibody was diluted at 1:200(room temperature, 30min).